

124°14'E

124°16'E

124°18'E

124°20'E

124°22'E

124°24'E

### LEGEND

- Municipal Boundary
- Barangay Boundary
- Rivers and Creeks
- National Road
- Provincial Road
- Municipal Road
- Barangay Road

### Population Change 2010-2015

- Decreased by 100 to 200
- Increased by up to 100
- Increased by 100 to 200
- Increased by over 200



Republic of the Philippines  
PROVINCE OF BOHOL  
City of Tagbilaran



PROVINCIAL PLANNING AND DEVELOPMENT OFFICE

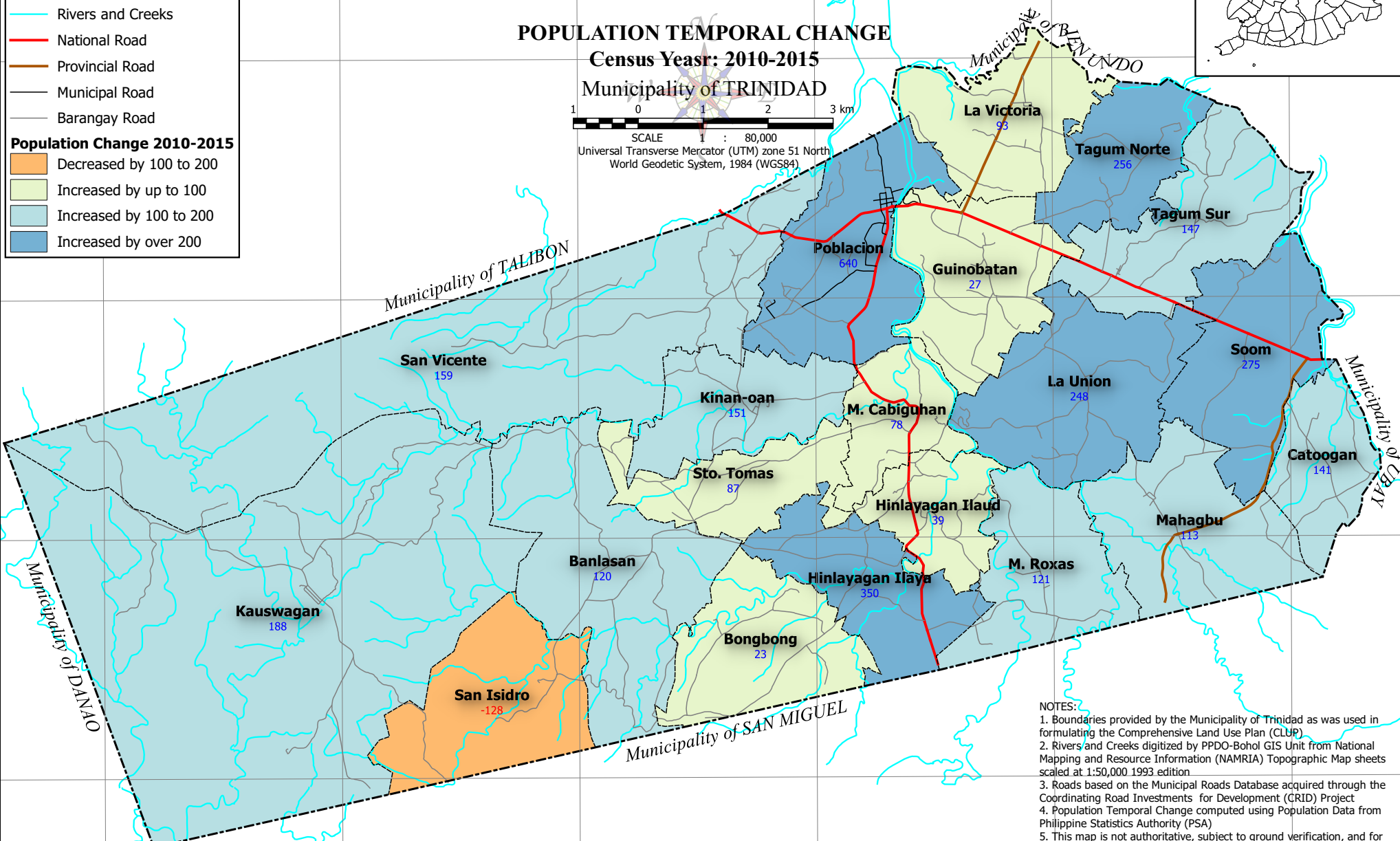
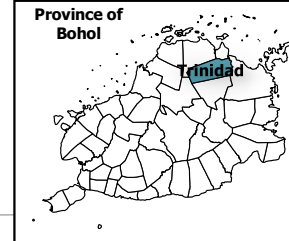
## POPULATION TEMPORAL CHANGE

Census Year: 2010-2015

Municipality of TRINIDAD



SCALE 1 : 80,000  
Universal Transverse Mercator (UTM) zone 51 North  
World Geodetic System, 1984 (WGS84)



- NOTES:
1. Boundaries provided by the Municipality of Trinidad as was used in formulating the Comprehensive Land Use Plan (CLUP)
  2. Rivers and Creeks digitized by PPDO-Bohol GIS Unit from National Mapping and Resource Information (NAMRIA) Topographic Map sheets scaled at 1:50,000 1993 edition
  3. Roads based on the Municipal Roads Database acquired through the Coordinating Road Investments for Development (CRID) Project
  4. Population Temporal Change computed using Population Data from Philippine Statistics Authority (PSA)
  5. This map is not authoritative, subject to ground verification, and for indicative use only

124°14'E

124°16'E

124°18'E

124°20'E

124°22'E

124°24'E

10°06'N

10°04'N

10°02'N

10°00'N

10°06'N

10°04'N

10°02'N

10°00'N